

THE WILLOWS



THE WILLOWS

GUILDFORD, SURREY, GU1 4PG

Well presented one bedroom apartment in Guildford town centre with off road parking for one car.

Available: 22nd May 2026

£1,250 PCM (Per Calendar Month)

Flat, 1 Bedroom, 1 Bathroom, 1 Reception,
Unfurnished

Key Features

- Guildford town centre
- Parking for one car
- Unfurnished
- One bedroom
- Available May





THE PROPERTY

Description

This modern and stylish apartment is fully equipped and fitted with a high quality kitchen and bathroom. There is a separate living space and double bedroom. Outside is allocated parking for one car and a small private patio area.



Location

The Willows apartments are located in a quiet, yet central residential area within walking distance of the town centre and mainline station.

Available May

EPC C

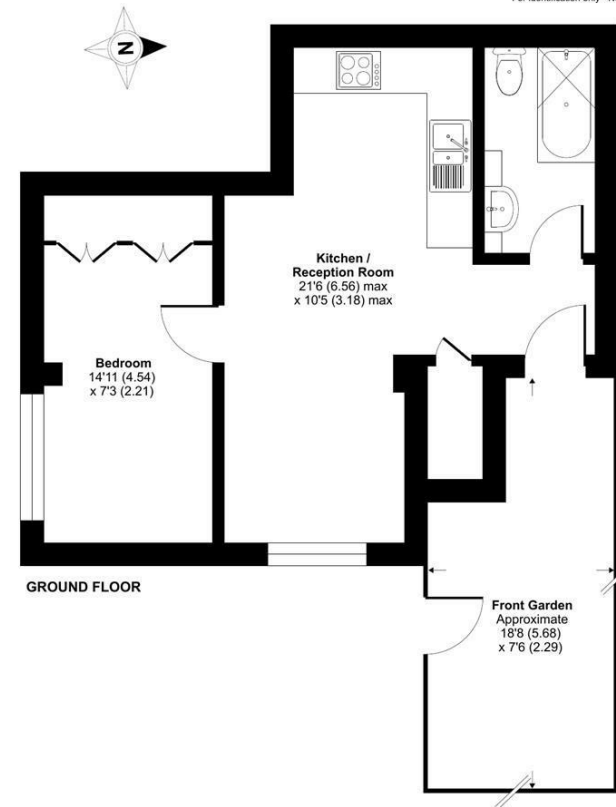
Guildford Borough Council tax band C

Holding deposit: £288

To check broadband and mobile phone coverage please visit Ofcom here: ofcom.org.uk/phones-telecoms-and-internet/advice-for-consumers/advice/ofcom-checker

Gardner Road, Guildford, GU1

Approximate Area = 387 sq ft / 35.9 sq m
For identification only - Not to scale



Floor plan produced in accordance with RICS Property Measurement 2nd Edition, Incorporating International Property Measurement Standards (IPMS2 Residential). © rdxcom 2026. Produced for Grantleys. REF: 1476825

Guildford

Poyle House 24 Epsom Road

Guildford

Surrey

GU1 3LE

Tel: 01483 407600

