

Dumpford Manor House, Trotton, Petersfield, GU31 5JR

Approximate Area = 3961 sq ft / 367.9 sq m

Limited Use Area(s) = 482 sq ft / 44.7 sq m

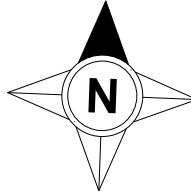
Annexe = 534 sq ft / 49.6 sq m

Garage = 391 sq ft / 36.3 sq m

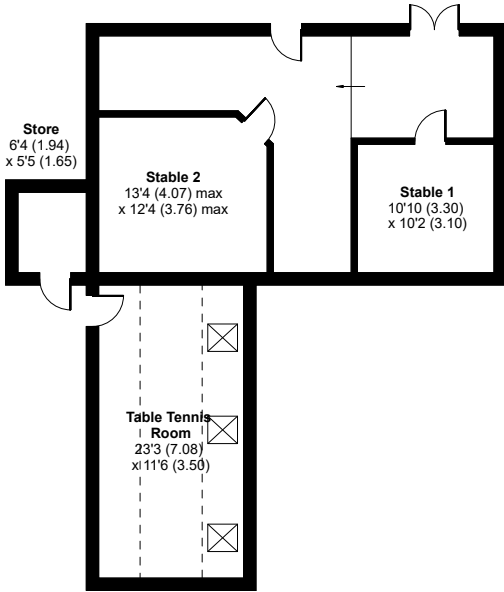
Outbuildings = 817 sq ft / 75.9 sq m

Total = 6185 sq ft / 574.4 sq m

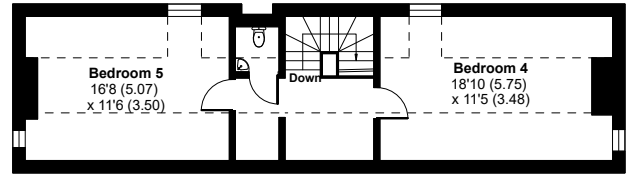
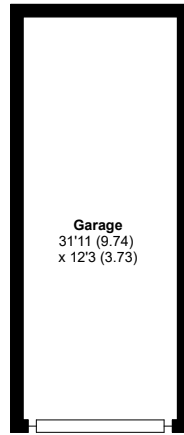
For identification only - Not to scale



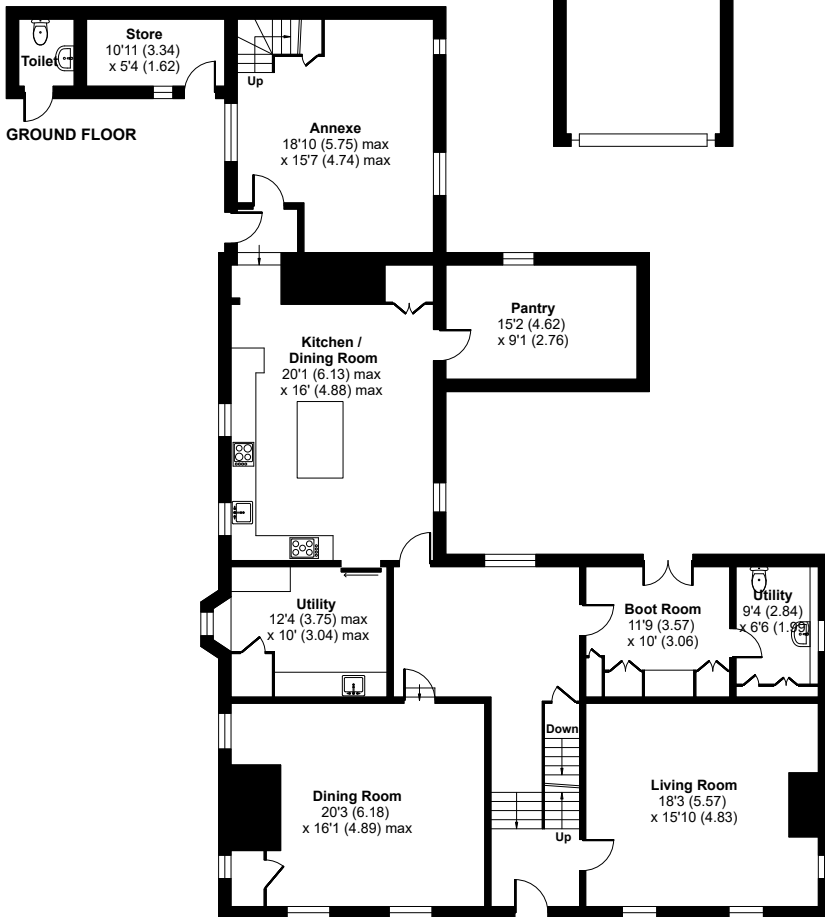
Denotes restricted head height



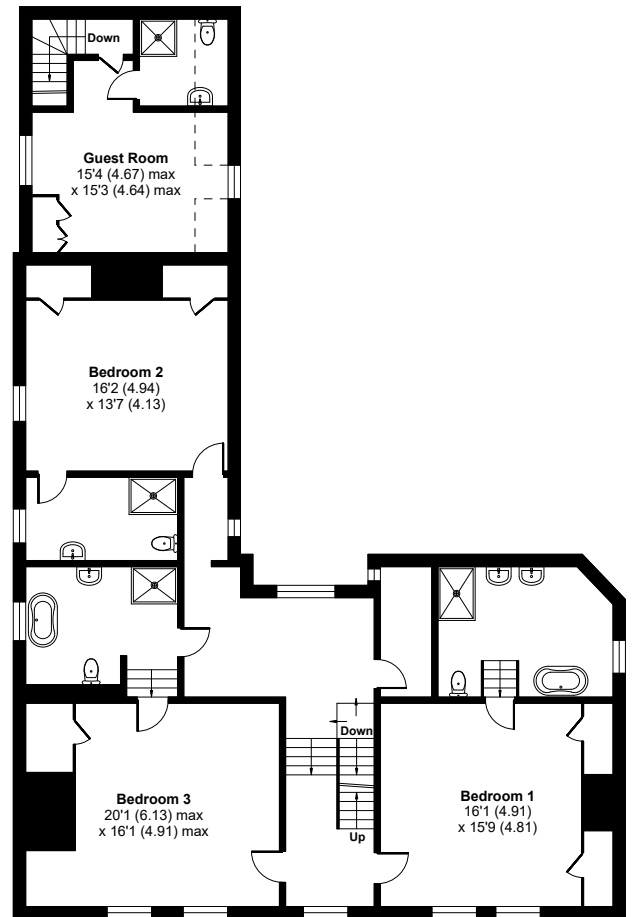
OUTBUILDING 1 / 2 / 3



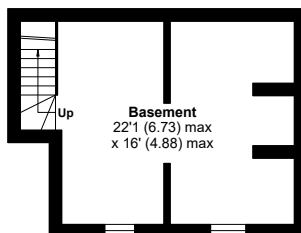
SECOND FLOOR



GROUND FLOOR



FIRST FLOOR



BASEMENT