

# GUILDFORD PARK AVENUE



# GUILDFORD PARK AVENUE

GUILDFORD, SURREY, GU2 7NL

A well-presented mid terrace three-bedroom property,  
located within moments of Guildford mainline station.  
Available in July.

---

Available: 21st July 2025

£1,950 Per Month (Per Calendar Month)

House - Terraced, 3 Bedroom, 1 Bathroom, 1 Reception,  
Unfurnished

## Key Features

- Mid terraced three bedroom house
- Guildford Town Centre location
- Garage en bloc
- Private Rear Garden
- Redecorated throughout
- Available immediately





## THE PROPERTY

### Description

This well-presented, mid terraced three bedroom property has recently been redecorated throughout and comprises newly fitted downstairs cloakroom, spacious reception, fully fitted kitchen with door leading to private rear garden and garage en bloc. To the first floor can be found two doubles and one single bedroom and family bathroom. Offered unfurnished and available immediately. On street permit parking.



## Location

The property is situated in a popular residential area close to Guildford Town Centre , mainline train station and all amenities.

On street permit parking

EPC rating D

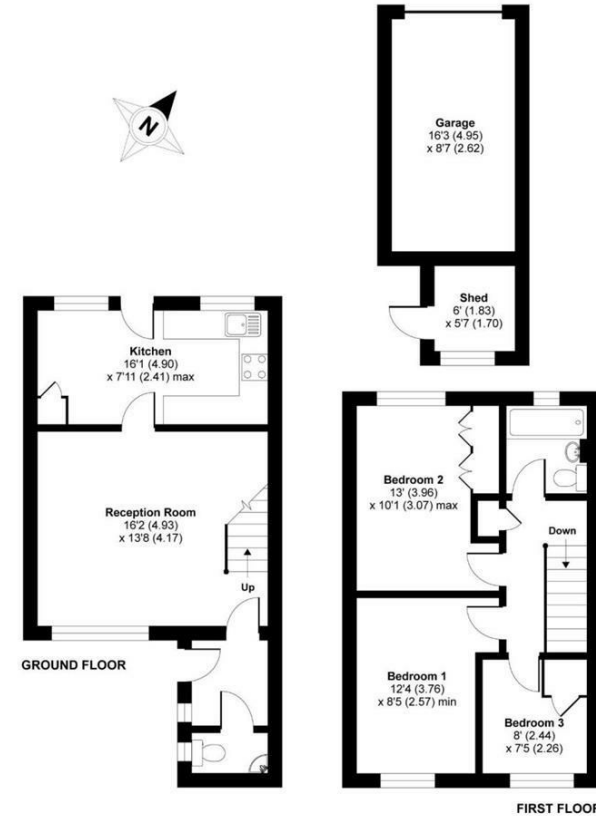
Guildford Borough Council tax band D: £2,388.01 (2025/26)

Holding Fee £450



## Guildford Park Avenue, Guildford, GU2

APPROX. GROSS INTERNAL FLOOR AREA 971 SQ FT 90.2 SQ METRES (EXCLUDES SHED & INCLUDES GARAGE)



Whilst every attempt has been made to ensure the accuracy of the floor plan contained here, measurements of doors, windows and rooms are approximate and no responsibility is taken for any error, omission or misstatement. These plans are for representation purposes only as defined by RICS Code of Measuring Practice and should be used as such by any prospective purchaser. Specifically no guarantee is given on the total square footage of the property if quoted on this plan. Any figure given is for initial guidance only and should not be relied on as a basis of valuation.

Copyright nichecom.co.uk 2018 Produced for PrestigeLettings.Co REF : 351165

## Guildford

Poyle House 24 Epsom Road  
Guildford  
Surrey  
GU1 3LE

Tel: 01483 407600

