

CAMELSDALE ROAD



CAMELSDALE ROAD

HASLEMERE, SURREY, GU27 3SL

A well presented mid-terraced cottage which is arranged over three floors with two double bedrooms, bathroom, spacious reception room with working open fireplace and a good size kitchen/breakfast room. There is a pretty rear garden with a pleasant outlook and patio area.

Available: 23rd June 2025

£1,500 Per Calendar Month (Per Calendar Month)

House - Terraced, 2 Bedroom, 1 Bathroom, 1 Reception, Unfurnished

Key Features

- Two double bedrooms
- Good size rear garden
- Open fire
- Opposite National Trust Land





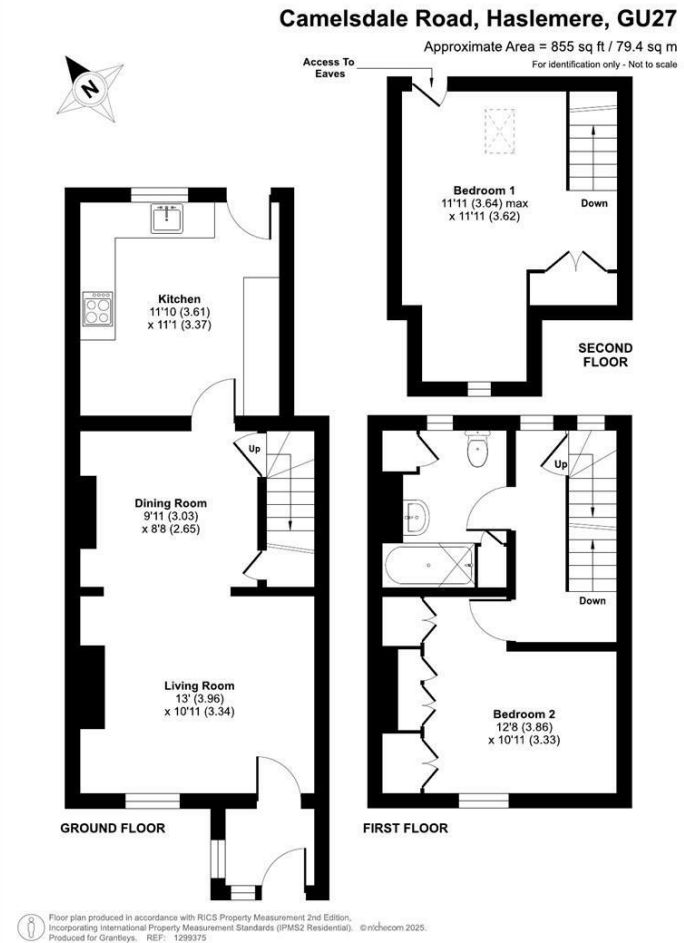
THE PROPERTY



A pretty cottage situated on the edge of Haslemere yet within walking distance of the main line station and opposite National Trust Land.

In brief detail the cottage comprises:

Front entrance porch, with door opening to the reception room, a good size sitting/dining room with a working open fireplace. Stairs lead to the first floor and door to, Kitchen/Breakfast Room, a good size room with fitted units at high and low level, stainless steel sink unit and drainer, door to rear garden and patio. First Floor, landing with further staircase to bedroom 2 and doors to, Bedroom 1, a good size front aspect double room with built in wardrobes. Bathroom, a matching suite comprising bath with shower over, w.c. and wash hand basin. Bedroom 2, a good size room with sloping ceilings and fitted wardrobes. Outside, a small garden to the front. To the rear is a patio and good size garden.



Haslemere Lettings

24 West Street
Haslemere
Surrey
GU27 2AH

Tel: 01428 651241

