

CHERTSEY STREET



CHERTSEY STREET

GUILDFORD, GU1 4BE

Available: 18th April 2025

£2,000 Per Month (Per Calendar Month)

Flat, 2 Bedroom
2 Bathroom, 1 Reception
Furnished

Summary

Stunning furnished two bedroom apartment with allocated parking for one car in Guildford town centre.

Key Features

- Town centre location
- Parking for one car
- Beautifully presented
- Two double bedrooms
- Two bathrooms
- Available now
- Furnished





THE PROPERTY

Description

The front door of the apartment opens into an entrance hall which leads into the open plan kitchen/diner living room. There is a double bedroom with wardrobes, separate shower room, utility cupboard with a washer/dryer and a master bedroom with ensuite bathroom including a shower over the bath. The apartment has hard flooring throughout, apart from the the master bedroom, which is carpeted. The kitchen has integrated appliances, including a fridge, freezer, dishwasher, electric oven and induction hob. The property is presented to a very high standard, is fully furnished and includes underfloor heating throughout.

There is allocated parking for one vehicle off road.



Location

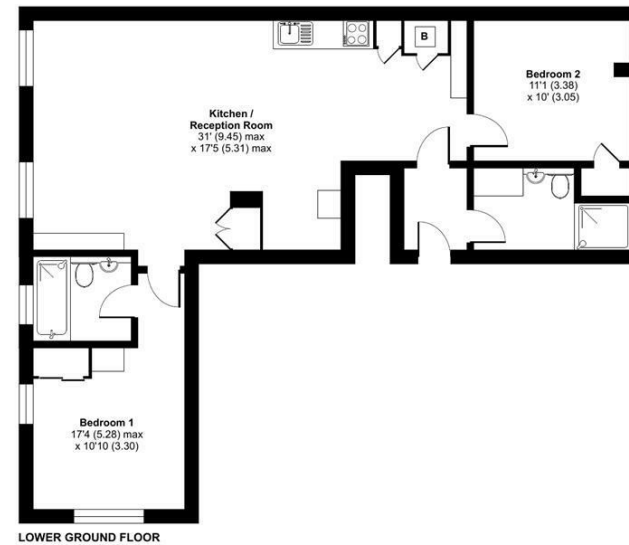
Scholars Court is located on Chertsey Street in the middle of Guildford town centre, within walking distance of all of Guildford's shops, restaurants, entertainment and rail station for easy commuting into London or the south coast.

The property is available immediately
Guildford Borough Council tax band D
EPC band C
Holding deposit: £461



Scholars Court, Chertsey Street, Guildford, GU1

Approximate Area = 868 sq ft / 80.6 sq m
For identification only - Not to scale



Floor plan produced in accordance with RICS Property Measurement 2nd Edition, Incorporating International Property Measurement Standards (IPMS2 Residential). © rdcocom 2025. Produced for Grantleys. REF: 1280321

Guildford

Poyle House 24 Epsom Road
Guildford
Surrey
GU1 3LE

Tel: 01483 407600

