

# ELSTEAD ROAD



# ELSTEAD ROAD

FARNHAM, GU10 1JD

A detached two double bedroom lodge located in a pretty rural location close to Puttenham Common.

Available: 20th December 2024

£1,700 PCM (Per Calendar Month)

Bungalow, 2 Bedroom, 1 Bathroom, 1 Reception,  
Not specified

## Key Features

- Detached
- Two double bedrooms
- Recently fitted kitchen
- Large private garden
- Stunning rural situation
- Available December





## THE PROPERTY

### Description

The lodge consists of a recently fitted neutral kitchen, there is also sitting room with working fireplace, two double bedrooms and a family bathroom with shower over the bath. There is a laundry and utility area.

The property benefits from a large, secluded garden surrounding the property and off street parking.



## Location

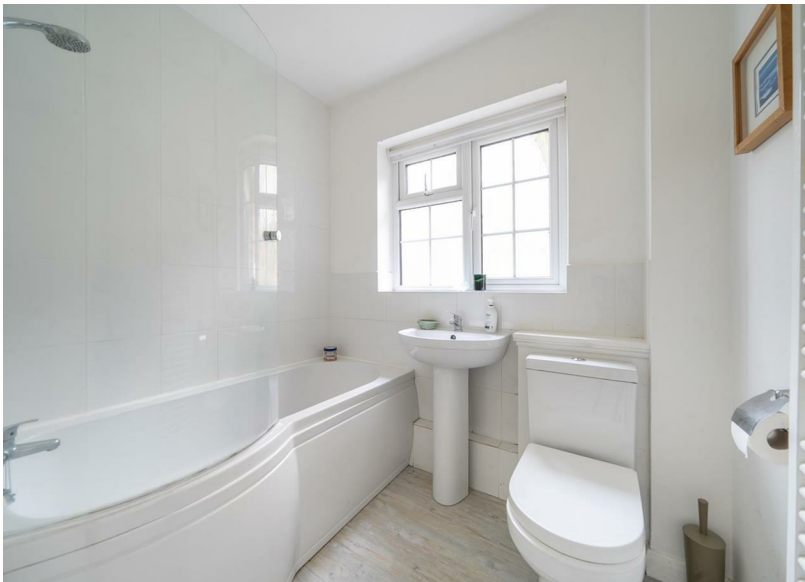
The cottage is located in a rural environment on the edge of Puttenham Common with the village only a few minutes drive away. The village includes a primary school and a public house. Guildford and beyond can be accessed via the A31 and A3.

EPC Rating D

Guildford Borough Council tax band D

Holding deposit: £392

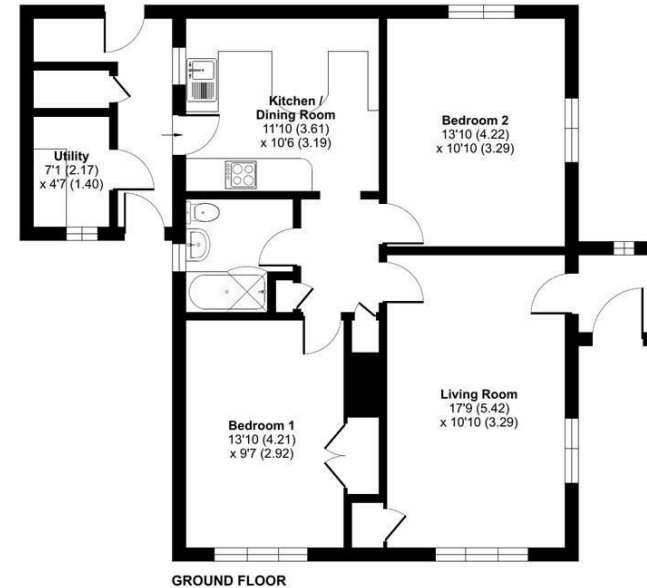
Available December



## Elstead Road, Farnham, GU10

Approximate Area = 880 sq ft / 81.8 sq m

For identification only - Not to scale



Floor plan produced in accordance with RICS Property Measurement 2nd Edition,  
Incorporating International Property Measurement Standards (IPMS2 Residential). © rdxcom 2024.  
Produced for Grantleys. REF: 1220477

## Guildford

Poyle House 24 Epsom Road

Guildford

Surrey

GU1 3LE

Tel: 01483 407600

