

STOUGHTON ROAD



STOUGHTON ROAD

SURREY, GU2 9LR

Redecorated one bedroom ground floor apartment with private garden, parking and bike lock up.

Available:

£1,300 PCM (Per Calendar Month)

Flat, 1 Bedroom, 1 Bathroom, 1 Reception,
Unfurnished

Key Features

- Redecorated throughout
- Private garden
- Off road parking for one car
- Newly carpeted
- Available July





THE PROPERTY

Description

Internally, this ground floor apartment includes a spacious sitting room with french doors to the garden, kitchen with appliances including electric oven, washing machine and fridge/freezer. There is a double bedroom with en-suite shower room. There is also a cloakroom. The apartment benefits from a private entrance and private garden which is half laid to lawn with an area for table and chairs with side gate entrance. Outside there is off street parking as well as a bike lock up.

The property has been recarpeted throughout as well as redecorated internally throughout.



Location

Stoughton Road is located just outside Guildford town centre with an excellent selection of local shops and restaurants, regular bus service into the town centre as well as the University plus providing excellent access to the A3 for onward travel.

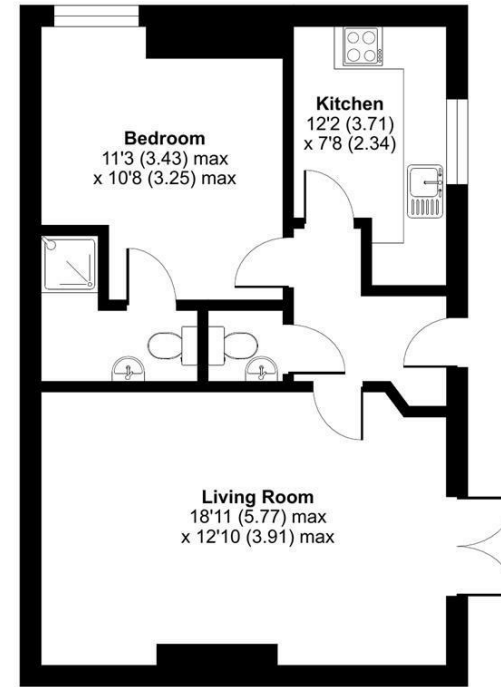
The property is available in Now.
EPC D
Guildford Borough Council tax band B

NB The letting of this property is on behalf of a Connected Person to Grantley



Stoughton Road, Guildford, GU2

Approximate Area = 570 sq ft / 52.9 sq m
For identification only - Not to scale



GROUND FLOOR



Floor plan produced in accordance with RICS Property Measurement Standards incorporating International Property Measurement Standards (IPMS2 Residential). © nichecom 2024. Produced for Grantleys. REF: 1149823.

Guildford

Poyle House 24 Epsom Road
Guildford
Surrey
GU1 3LE

Tel: 01483 407600

