

TANNERS LANE



TANNERS LANE

HASLEMERE, GU27 2PZ

This one bedroom semi-detached bungalow, to suit the over 60's is available to rent now.

Available: 29th July 2024

£950 PCM (Per Calendar Month)

Bungalow - Detached, 1 Bedroom, 1 Bathroom, 1 Reception, Unfurnished

Key Features

- Single storey residence
- Off road parking
- Double bedroom
- Reception room
- Close to Town Centre
- Opposite Town Meadow





THE PROPERTY

A very rarely available semi detached bungalow on this sought after age restricted development located within a short walk of Haslemere Town Centre.



Communal grounds and pathways lead up to the Front Door.

Entrance hall with built in storage cupboard. Sitting room with french doors opening to the front terrace. Kitchen fitted with cooker and fridge freezer. (Washing facilities available in the communal laundry room). Double bedroom with built in wardrobe. Bathroom with step in bath.

Outside, well maintained communal grounds, resident and visitor car parking space.

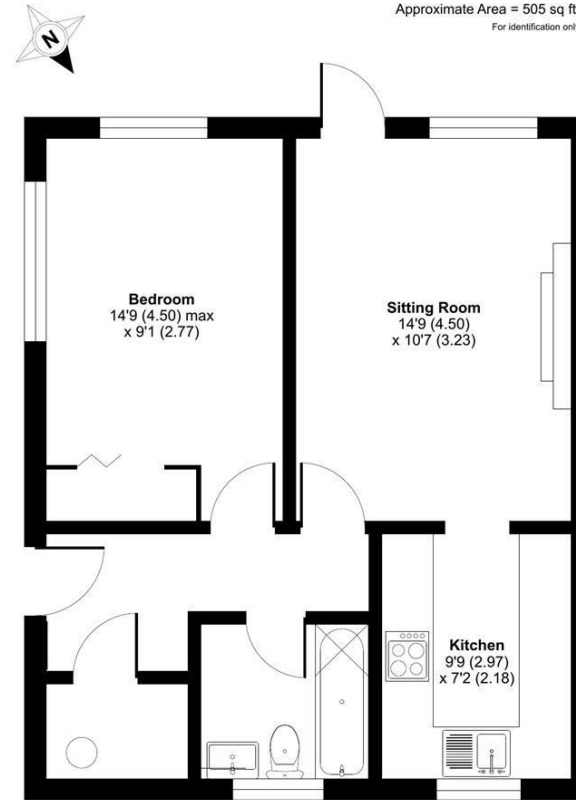
Available end of July.
No pets or smokers.
Electric heating.
Mains drainage.

EPC - D
Council Tax Band - C



Tanners Lane, Haslemere, GU27

Approximate Area = 505 sq ft / 47 sq m
For identification only - Not to scale



GROUND FLOOR

 Certified Property Measurer
Floor plan produced in accordance with RICS Property Measurement Standards incorporating International Property Measurement Standards (IPMS2 Residential). © nichecom 2024. Produced for Grantleys. REF: 1159975.

Haslemere Lettings

24 West Street
Haslemere
Surrey
GU27 2AH

Tel: 01428 651241

