

COLLARDS GATE



COLLARDS GATE

HASLEMERE, SURREY, GU27 2HE

A three bedroom home located in the heart of the Town within this small select gated development.

Available: 20th May 2025

£1,850 PCM (Per Calendar Month)

House - Terraced, 3 Bedroom, 2 Bathroom, 2 Reception, Unfurnished

Key Features

- Within small select gated development
- In the heart of the Town Centre
- Backing onto National Trust land
- Resident parking
- 3 Bedrooms





THE PROPERTY

A pretty end of terrace cottage style property within a small and select gated development of just ten houses, in the heart of the pretty town centre of Haslemere. The main line station, with an excellent service to Waterloo in approximately 50 minutes is just a few minutes walk.



In brief detail, the accommodation comprises; entrance hall with w.c, hand wash basin and wood flooring. Bespoke fitted kitchen with hob, extractor, oven and separate microwave/combo oven, dishwasher and fridge/freezer, open plan to a good size reception room with an excellent range of built in storage units, one housing a safe. Further rear aspect reception room with bifolding doors opening to the rear enclosed paved garden.

First floor : Main bedroom with en-suite shower room and two fitted double wardrobes. Bedroom 2, a double room with fitted wardrobes and a third single bedroom. Bathroom comprising bath with hand held shower attachment, w.c. and wash basin.

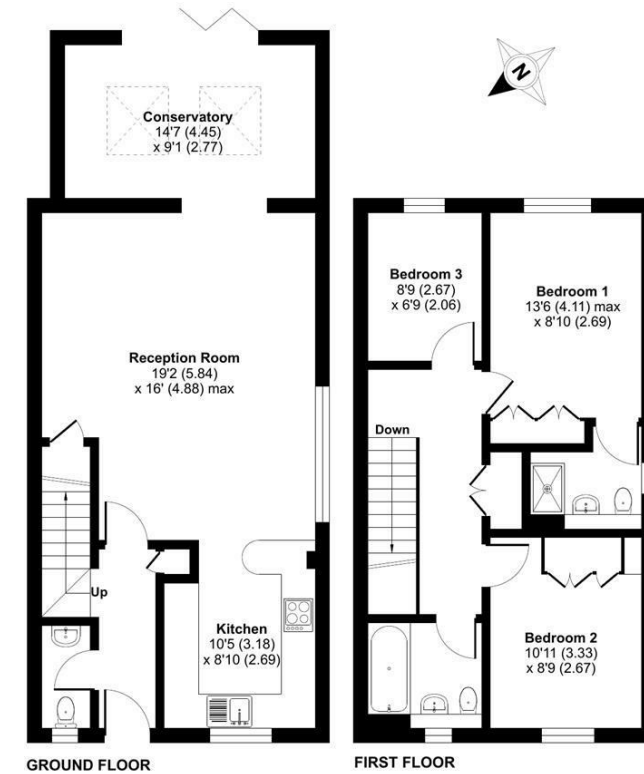
Outside : two allocated resident parking spaces, enclosed rear paved garden and a communal meadow garden for residents use.

EPC Rating C
 Council Tax Band E
 Mains gas central heating
 Mains drainage



High Street, Haslemere, GU27

Approximate Area = 1110 sq ft / 103.1 sq m
 For identification only - Not to scale



RICS Certified Property Measurer Floor plan produced in accordance with RICS Property Measurement Standards incorporating International Property Measurement Standards (IPMS2 Residential). Produced for Grantleys. REF: 1107398. © nichecom 2024.

Haslemere Lettings

24 West Street
 Haslemere
 Surrey
 GU27 2AH

Tel: 01428 651241

