

SPRINGFIELD HOUSE



SPRINGFIELD HOUSE

GUILDFORD, SURREY, GU1 4DW

A luxurious one double bedroom top floor apartment located in a town centre location.

Available: 28th March 2025

£1,450 PCM (Per Calendar Month)

Flat, 1 Bedroom, 1 Bathroom, 1 Reception,
Unfurnished

Key Features

- Town centre
- Unfurnished
- One Bedroom
- Top floor
- High specification
- Available end of March





THE PROPERTY

Description

This spacious and well presented, unfurnished apartment is located in central Guildford, within close proximity of the High Street and railway station.

This top floor apartment offers a generous living area and modern kitchen with quartz worktops as well as integrated appliances including an induction hob. There is a spacious double bedroom, beautifully finished en-suite bathroom with shower over the bath, underfloor heating and a heated towel rail.



Location

Springfield Road is located in a very central location, walking distance to Guildford High Street, both the main line and London Road rail stations as well as Waitrose supermarket.

EPC Rating C

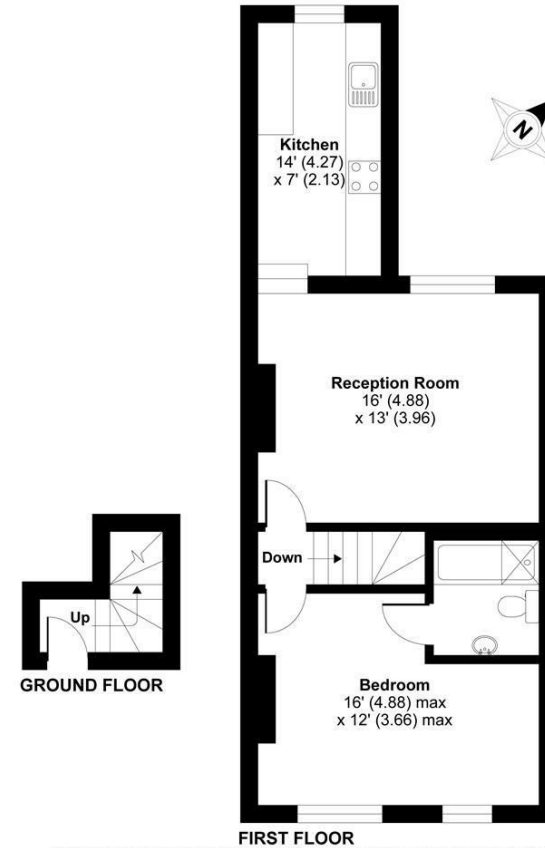
Guildford Borough Council tax band C

Holding deposit: £334



Springfield Road , Guildford, GU1

APPROX. GROSS INTERNAL FLOOR AREA 604 SQ FT 56.1 SQ METRES



Whilst every attempt has been made to ensure the accuracy of the floor plan contained here, measurements of doors, windows and rooms are approximate and no responsibility is taken for any error, omission or misstatement. These plans are for representation purposes only as defined by RICS Code of Measuring Practice and should be used as such by any prospective purchaser. Specifically no guarantee is given on the total square footage of the property if quoted on this plan. Any figure given is for initial guidance only and should not be relied on as a basis of valuation.

Copyright nichecom.co.uk 2018 Produced for Grantleys REF : 402170

Guildford

Poyle House 24 Epsom Road

Guildford

Surrey

GU1 3LE

Tel: 01483 407600

