

# GROVERS MANOR



# GROVERS MANOR

HINDHEAD, SURREY, GU26 6JP

A fabulous two bedroom, two bathroom second floor apartment within this exclusive development, with underground parking and a balcony.

Available: 1st July 2024

£1,450 PCM (Per Calendar Month)

Flat, 2 Bedroom, 2 Bathroom, 1 Reception,  
Unfurnished

## Key Features

- Exclusive development
- Underground gated parking
- Two double bedrooms
- Spacious and light accommodation
- Balcony





## THE PROPERTY

A spacious and high specification two double bedroom, two bathroom 2nd floor apartment, within this exclusive development of luxury purpose built apartments.



In brief detail the accommodation comprises:

Sweeping entrance leads to the communal entrance with video entry phone system. Stairs or lift lead to the second floor. Spacious entrance hall with built in storage cupboards, good size main bedroom with built in wardrobes and en-suite bathroom. 2nd double bedroom and separate shower room. Spacious open plan living area with fully fitted and equipped kitchen. Balcony approached from the sitting room and main bedroom.

Allocated underground gated parking and visitor parking.

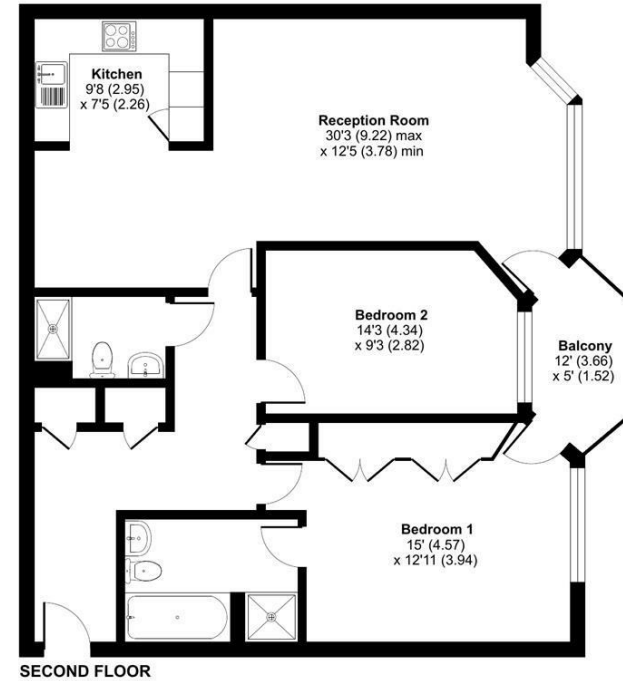
Mains gas  
Mains drainage  
Available beginning July  
Regret no pets, children or smokers

EPC B  
Council Tax Band E



## Wood Road, Hindhead, GU26

Approximate Area = 1043 sq ft / 96.8 sq m  
For identification only - Not to scale



 Floor plan produced in accordance with RICS Property Measurement Standards incorporating International Property Measurement Standards (IPMS2 Residential). © nichecom 2024. Produced for Grantleys. REF: 1153269

## Haslemere Lettings

24 West Street  
Haslemere  
Surrey  
GU27 2AH

Tel: 01428 651241

