

DOMEL



DOMEL

HASLEMERE, SURREY, GU27 1NL

A ground floor one bedroom flat having just been redecorated and re-carpeted. Within walking distance of the station and shops. Private residents parking.

Available: 7th August 2023

£875 Per Month (Per Calendar Month)

Flat, 1 Bedroom, 1 Bathroom, 1 Reception,
Unfurnished

Key Features

- Ground floor flat
- Newly decorated
- Re-carpeted
- Private resident parking
- Within walk of station
- Within walk of shops





THE PROPERTY



A ground floor one bedroom flat within this small select block of just four flats. The flat is conveniently located within a short walk of the Wey Hill amenities, main line station and Leisure Centre.

The property has just been redecorated and recarpeted throughout.

Front door opens to a good size light and airy reception room. White bathroom suite comprising, w.c, hand basin, bath with shower over. Fitted and equipped kitchen with oven and hob, under counter fridge and washer/dryer. Gas boiler. Rear aspect double bedroom.

Available immediately.

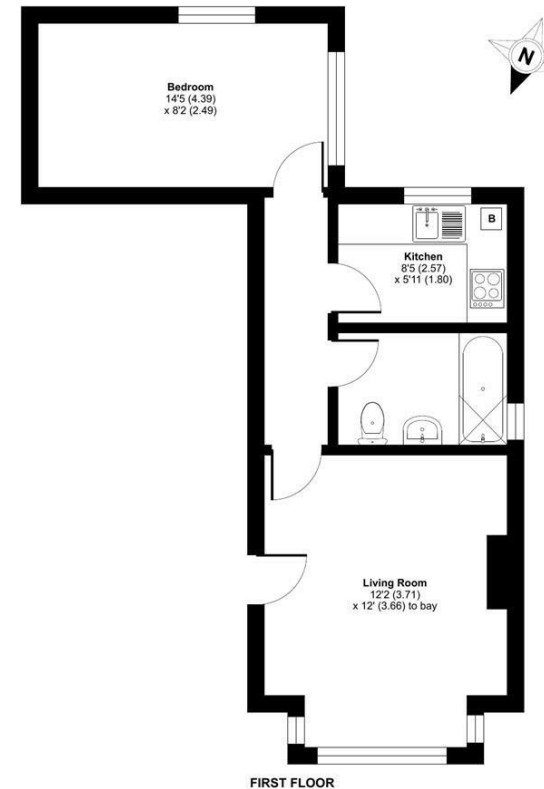
EPC Band - D

Council Tax Band B - 2023/24 - £1742.21



Liphook Road, GU27

Approximate Area = 437 sq ft / 40.5 sq m
For identification only - Not to scale



FIRST FLOOR



Floor plan produced in accordance with RICS Property Measurement Standards incorporating International Property Measurement Standards (IPMS2 Residential). © nichecom 2023. Produced for Grantleys. REF: 1013390.

Haslemere Lettings

24 West Street
Haslemere
Surrey
GU27 2AH

Tel: 01428 651241

