

WINDRUSH HOUSE



WINDRUSH HOUSE

BRAMLEY, GU5 0HF

A newly decorated two bedroom apartment in the heart of Bramley village. Available now.

Available: 14th July 2023

£1,100 PCM (Per Calendar Month)

Flat, 2 Bedroom, 1 Bathroom, 1 Reception,
Unfurnished

Key Features

- Newly decorated
- Two bedrooms
- Utility room
- Managed by Grantley
- Available now
- First Floor Apartment





THE PROPERTY



Description

The two bedroom apartment has just been neutrally decorated throughout. There is an open plan kitchen and living area. The kitchen is modern with inbuilt appliances, gas cooker and electric oven, there is a bathroom with shower and separate bath. You will also find a utility room with washing machine and two bedrooms.

The property benefits from gas central heating and double glazed windows.

Location

Windrush House is located in the heart of Bramley village, with greengrocer, butcher, convenience stores, public houses and restaurant.

It is available for immediate occupation.

Unfortunately no pets. There is no allocated parking.

Property falls under council tax Band B, Waverley £1,675.76 2023/24

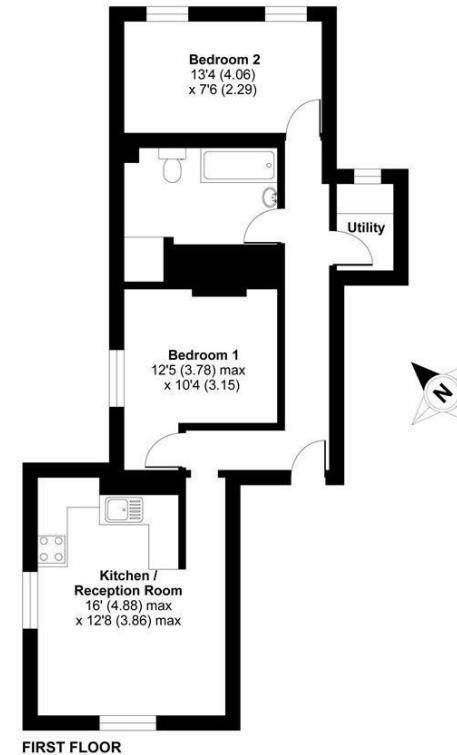
EPC rating C

NB The letting of this property is on behalf of a Connected Person to Grantley



Windrush House, High Street, Bramley, Guildford, GU5

APPROX. GROSS INTERNAL FLOOR AREA 643 SQ FT 59.7 SQ METRES



Whilst every attempt has been made to ensure the accuracy of the floor plan contained here, measurements of doors, windows and rooms are approximate and no responsibility is taken for any error, omission or misstatement. These plans are for representation purposes only as defined by RICS Code of Measuring Practice and should be used as such by any prospective purchaser. Specifically no guarantee is given on the total square footage of the property if quoted on this plan. Any figure given is for initial guidance only and should not be relied on as a basis of valuation.

Copyright nichecom.co.uk 2018 Produced for Grantleys REF : 256023

Guildford

Poyle House 24 Epsom Road

Guildford

Surrey

GU1 3LE

Tel: 01483 407600

