

# THE MEADS



# THE MEADS

## HASLEMERE, GU27 1LA

A super first floor one bedroom apartment situated in a quiet residential area in Haslemere. The property is close to the local shops and the mainline railway station.

The property benefits from its own front door leading upstairs to a light and bright sitting

---

Available: 8th May 2023

£850 Per Month (Per Calendar Month)

Flat, 1 Bedroom, 1 Bathroom, 1 Reception,  
Unfurnished

### Key Features





## THE PROPERTY



A super first floor one bedroom apartment situated in a quiet residential area in Haslemere. The property is close to the local shops and the mainline railway station.

The property benefits from its own front door leading upstairs to a light and bright sitting room, opening to a modern kitchen with plenty of floor and wall units. The property features a good sized double bedroom with dual aspect windows. There is a three piece bathroom off the hallway with bath, WC and low level sink.

Regret no pets or children.

Waverley Council Tax Band B - £1742.21 per annum. EPC Band C. Deposit £980.00

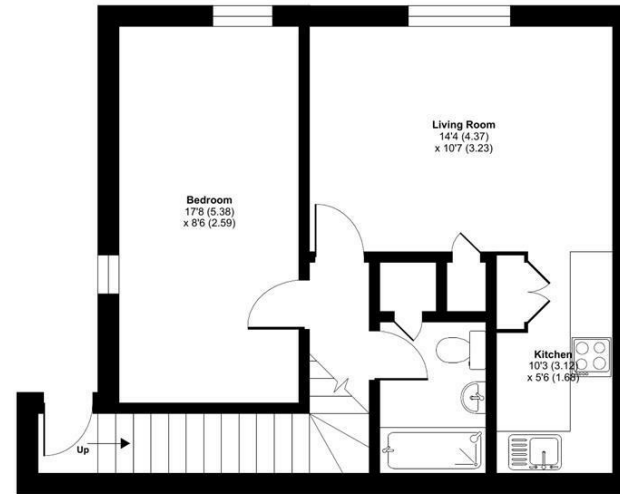


## The Meads, Haslemere, GU27

Approximate Area = 504 sq ft / 46.8 sq m  
For identification only - Not to scale



Denotes restricted head height



FIRST FLOOR



Floor plan produced in accordance with RICS Property Measurement Standards incorporating International Property Measurement Standards (IPMS2 Residential). © nichecom 2023. Produced for Grantleys. REF: 970014

## Haslemere Lettings

24 West Street  
Haslemere  
Surrey  
GU27 2AH

Tel: 01428 651241

