

WISPERS PARK,  
 HASLEMERE,  
 SURREY,

£1,495 PCM



2 Bedrooms . 1 Receptions . 2 Bathrooms . Flat

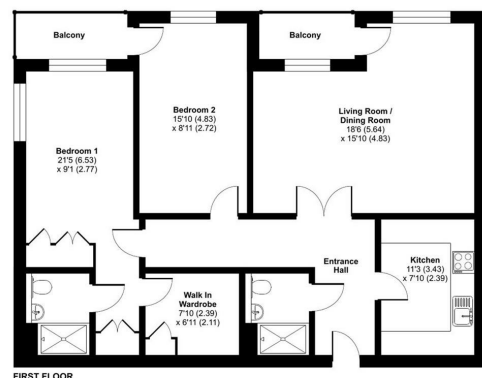
**Available From: 10th July 2023**

A luxury retirement apartment for the over 55's with two double bedrooms and bathrooms, located on the outskirts of Haslemere in a beautifully maintained setting.

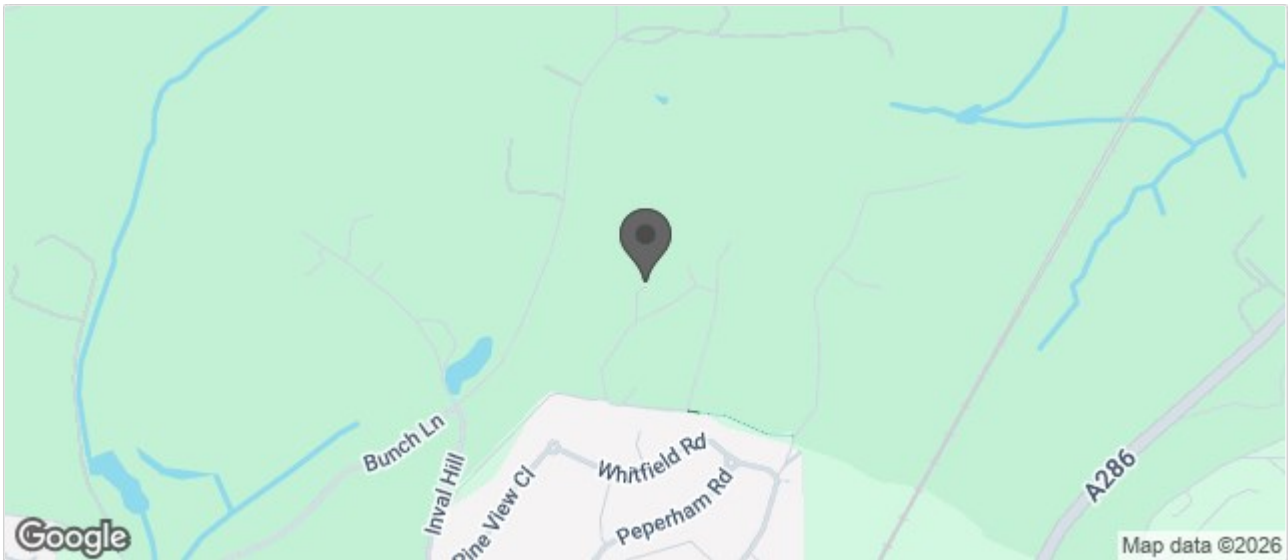
- Beautifully maintained grounds
- Lift to all floors
- Spacious rooms
- Beautifully presented
- Allocated parking
- Equipped kitchen
- Available immediately

Weycombe House, Wispers Lane, Haslemere, GU27

Approximate Area = 956 sq ft / 88.8 sq m  
 For identification only - Not to scale



 Certified Property Measurer  
 Floor plan produced in accordance with RICS Property Measurement Standards incorporating International Property Measurement Standards (IPMS Residential).  
 Produced by Clarke Gannon. REF: 350566



A beautifully appointed spacious first floor apartment set within the sought after Wispers Park., set within approximately 25 acres of parkland grounds and adjoining the grade II listed Oak Hall.

In brief detail the accommodation comprises;

Communal entrance hall with either stairs or lift to provide access to the first floor which has a communal seating area. and laundry room.

Private entrance hall leads to the reception room which overlooks the rear of the development having a pleasant rural outlook. Separate fully fitted and equipped kitchen. There are two double bedrooms, the primary bedroom has built in wardrobes ,dressing area en-suite shower room, second double bedroom and separate shower room.

Allocated residents parking.

EPC Rating - B  
 Council Tax Band E - £2556

