

THE WILLOWS



THE WILLOWS

GUILDFORD, SURREY, GU1 4PG

A recently redecorated, two-bedroom, two bathroom town centre apartment with allocated parking for one car and private outside area.

Available: 7th August 2025

£1,875 PCM (Per Calendar Month)

Flat, 2 Bedroom, 2 Bathroom, 1 Reception,
Unfurnished

Key Features

- Town Centre Location
- One allocated parking space
- Two Bedrooms
- Two Bathrooms
- Neutrally redecorated
- Private outside space
- Available in August





THE PROPERTY

Description

The entrance way leads to a private staircase to access this top floor apartment. This modern and stylish apartment is fully equipped and neutrally decorated throughout. The apartment features a living room, with access to the private outside area, fully fitted kitchen, a double bedroom with en-suite bathroom, a second bedroom and a family bathroom with enclosed shower.

Outside, there is one allocated parking space.



Location

The Willows apartments are located in a quiet yet central residential area within walking distance of the town centre and mainline station.

Holding deposit; £432

Council tax Band C; £2,122.67 for 2025/26

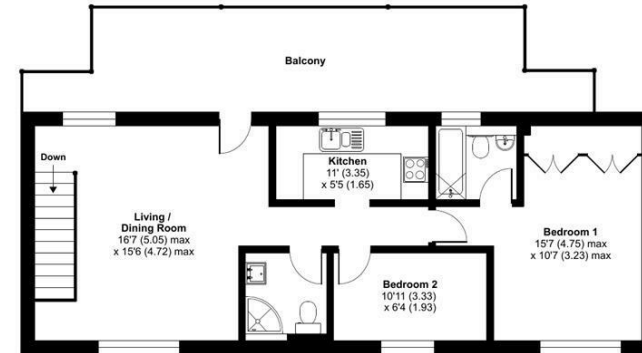
EPC Band D

Available in August

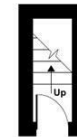


Gardner Road, Guildford, GU1

Approximate Area = 697 sq ft / 64.7 sq m
For identification only - Not to scale



FIRST FLOOR



GROUND FLOOR



Floor plan produced in accordance with RICS Property Measurement Standards incorporating International Property Measurement Standards (IPMS2 Residential). © nichecom 2023. Produced for Grantleys. REF: 940459

Guildford

Poyle House 24 Epsom Road

Guildford

Surrey

GU1 3LE

Tel: 01483 407600

