

FALCON HOUSE,
GUILDFORD,
SURREY

£1,500 PCM



2 Bedrooms . 1 Reception . 1 Bathrooms . Flat

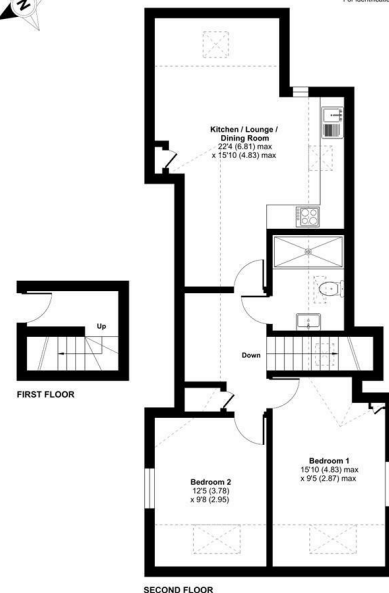
Available: 25th November 2022

Recently built top floor, two bedroom, one bathroom apartment situated within easy reach of Guildford's historic cobbled High Street.

- Town Centre
- Modern Apartment
- Two bedrooms
- Gas central heating
- Available now

Falcon Road, Guildford, GU1

Approximate Area = 479 sq ft / 45 sq m
Limited Use Area(s) = 265 sq ft / 25 sq m
Total = 744 sq ft / 70 sq m
For identification only - Not to scale



Certified Property Measurement Floor plan produced in accordance with RICS Property Measurement Standards incorporating International Property Measurement Standards (IPMS2 Residential). © Grantley 2022. Produced by Grantley, REG: 50229