

GODALMING ROAD,
GODALMING,
SURREY,

£5,500 PCM

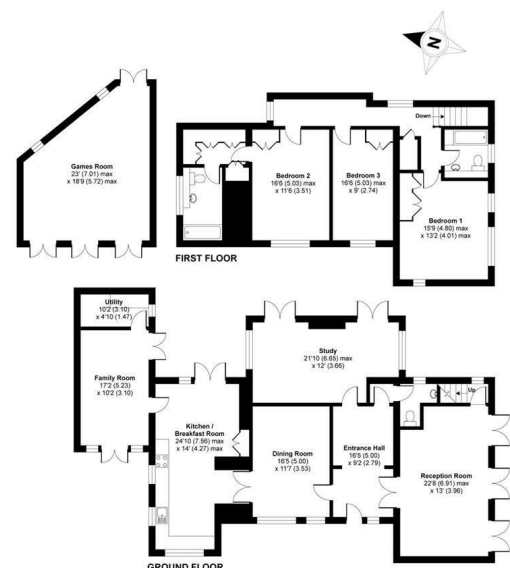


4 Bedrooms . 4 Receptions . 3 Bathrooms . House - Detached
Deer Park Cottage, Godalming Road, Godalming, GU8
APPROX. GROSS INTERNAL FLOOR AREA 2481 SQ FT 230.4 SQ METRES (EXCLUDES GAMES ROOM)

Available: 1st February 2023

A picturesque four-bedroom family house in a charming rural setting, with easy access to local amenities and including versatile accommodation including a self-contained double-bedroom 'chapel' on the grounds.

- Detached House
- Gated Entrance
- Large Garden
- Separate Chapel Conversion
- Part-furnished
- Games Room
- Gardener Included
- Internal photography coming soon!



Whilst every attempt has been made to ensure the accuracy of the floor plan contained here, measurements of doors, windows and rooms are approximate and no responsibility is taken for any error, omission or misstatement. These plans are for representation purposes only as defined by RICS Code of Measuring Practice and should be used as such by any prospective purchaser. Specifically no guarantee is given on the total square footage of the property if quoted on this plan. Any figure given is for initial guidance only and should not be relied on as a basis of valuation.