

# LONDON ROAD



# LONDON ROAD

SURREY, GU1 1UF

A fantastic, recently renovated, one double bedroom first floor apartment with allocated parking for one car and use of the communal garden

Available: 8th October 2022

£1,100 PCM (Per Calendar Month)

Flat, 1 Bedroom, 1 Bathroom, 1 Reception,  
Unfurnished

## Key Features





## THE PROPERTY



#### Description

This refurbished conversion apartment comprises of a recently fitted modern kitchen benefitting from electric hob, oven, washing machine and freestanding fridge/freezer. The apartment benefits from an open plan living and kitchen area, separate double bedroom and recently installed bathroom suite with shower over bath. The apartment benefits from very high ceilings and large windows giving the apartment a fantastic amount of natural light. There is one parking space with the flat and use of communal gardens.

#### Location;

The apartment is located close to Stoke Park, but still within walking distance of Guildford, a historic and vibrant county town of Surrey, offering first class entertainment and shopping, and is a gateway to some of the most stunning scenery in the South East of England.

Guildford has excellent transport links, with the A3 linking to the M25 just 6 miles away and for those that commute by train, the service to Waterloo from the mainline station is excellent, with times from approximately 36 minutes.

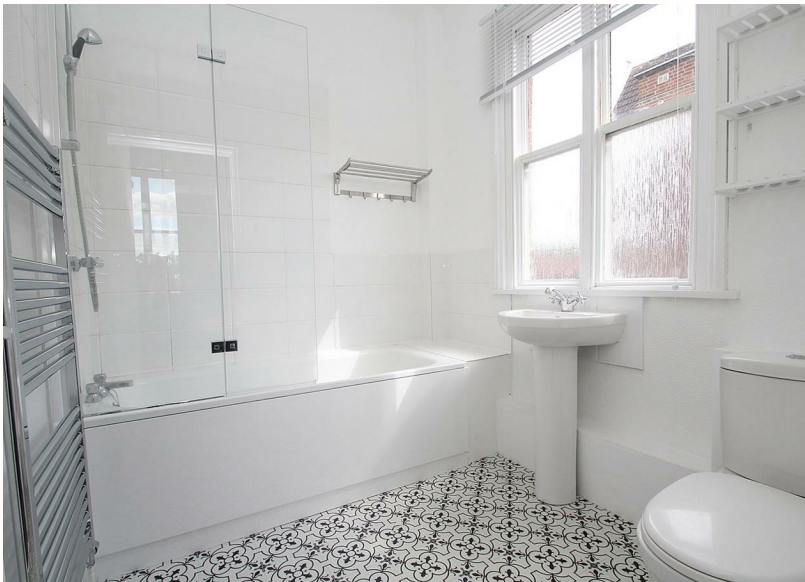
Unfortunately no pets.

The property is available in October.

Rent includes water rates.

EPC rating C.

Guildford Borough Council tax band C: £1,874.47 (2022/23)



---

## Guildford

Poyle House 24 Epsom Road  
Guildford  
Surrey  
GU1 3LE

Tel: 01483 407600

