

CHESTNUT AVENUE



CHESTNUT AVENUE

HASLEMERE, SURREY, GU27 2AT

A character three bedroom, three reception room home within a short walk of the High Street, station and local schools.

Available: 12th April 2023

£1,795 Per Month (Per Calendar Month)

House - Semi-Detached, 3 Bedroom, 1 Bathroom, 3 Reception, Unfurnished

Key Features

- Within walking distance of Town Centre
- Within walking distance of station
- Pretty rear garden
- 3 bedrooms
- 3 reception rooms





THE PROPERTY



A character home located in the heart of Haslemere, in a peaceful Avenue, offering deceptively spacious accommodation. The high street and local schools are within a short walk. The main line train station to London Waterloo in approximately 50 minutes is also within a short walk.

Briefly, the accommodation comprises:

Entrance hall, front aspect sitting room with working open fireplace.

Fitted and equipped kitchen, opening to a family room/dining room. Further rear reception room with doors opening to the rear garden.

First floor, three double bedrooms and a family bathroom.

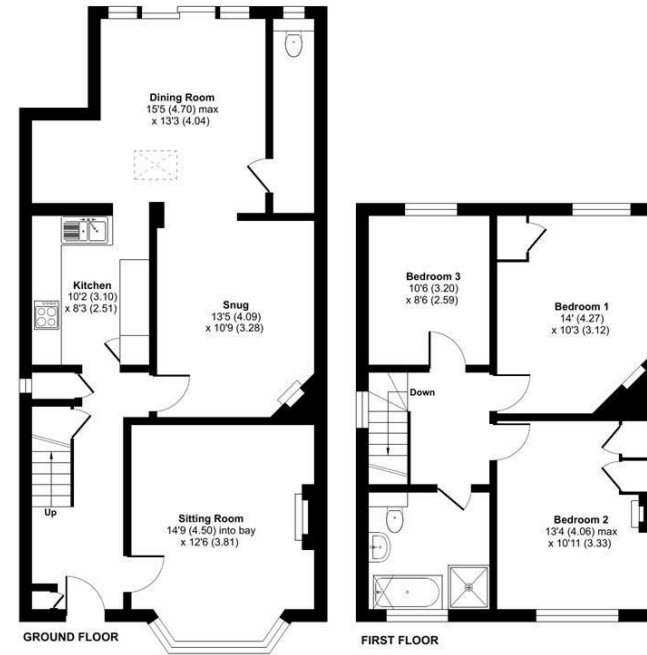
Rear garden with paved terrace and lawn.

Parking available on the street outside. (Residents parking permit required).



Chestnut Avenue, Haslemere

Approximate Area = 1276 sq ft / 119 sq m
For identification only - Not to scale



Floor plan produced in accordance with RICS Property Measurement Standards incorporating International Property Measurement Standards (IPMS2 Residential). © nichecom 2021. Produced for Grantleys. REF: 870130

Haslemere Lettings

24 West Street
Haslemere
Surrey
GU27 2AH

Tel: 01428 651241

