

NEWTOWN ROAD



NEWTOWN ROAD

LIPHOOK, HAMPSHIRE, GU30 7DT

A charming character cottage situated in a central location in Liphook with three bedrooms and a pretty rear garden.

Available: 30th June 2022

£1,450 Per Month (Per Calendar Month)

House - Semi-Detached, 3 Bedroom, 2 Bathroom, 2 Reception,
Not specified

Key Features

- Within walk of station
- Within walk of village centre
- Pretty rear garden
- Three bedrooms





THE PROPERTY



A pretty cottage located in convenient location in the centre of Liphook, within a short walk of the main line station and village centre. The property retains original features and is presented in excellent order.

Entrance porch, leads to open plan accommodation. The sitting room has wooden floors and an open fireplace, opening to the dining area, with wooden floors, a feature fireplace and inner hallway with door to rear garden. The dining area opens to the fully fitted and equipped kitchen. Separate utility room and back door to the rear garden.

First floor, front aspect main bedroom with built in wardrobes, second double bedroom and a good size family bathroom with bath, separate shower cubicle, w.c and hand wash basin. On the third floor is a further double bedroom with eaves storage.

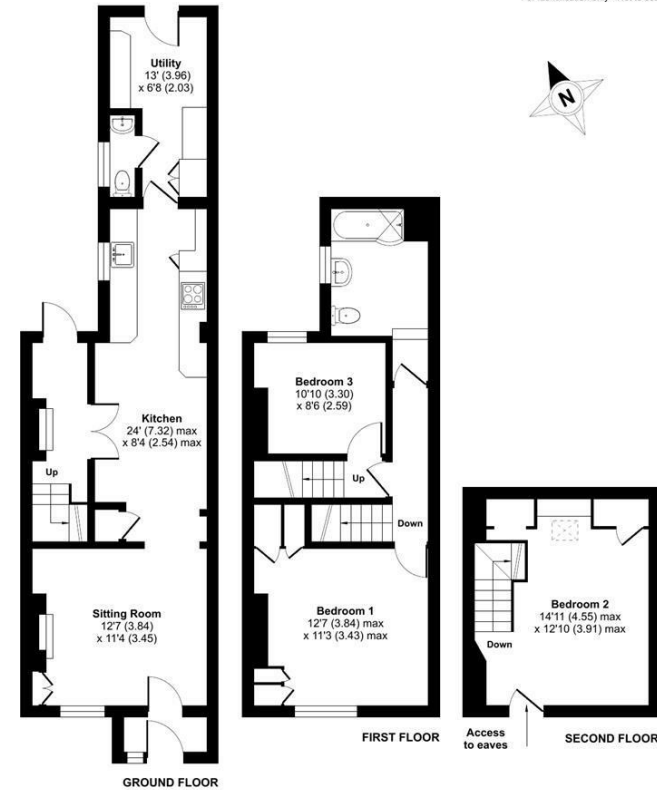
To the rear of the property, is a good size, easy to maintain garden with garden storage shed.

Available end June.



Newtown Road, Liphook, GU30

Approximate Area = 1099 sq ft / 102 sq m
For identification only - Not to scale



Floor plan produced in accordance with RICS Property Measurement Standards incorporating International Property Measurement Standards (IPMS2 Residential). © nichecom 2022. Produced for Grantleys. REF: 84468

Haslemere Lettings

24 West Street
Haslemere
Surrey
GU27 2AH

Tel: 01428 651241

