

# LONDON ROAD



# LONDON ROAD

SURREY, GU1 1UF

A spacious one double bedroom flat within an imposing Victorian building approx one mile from Guildford town centre with allocated parking. Available now.

Available: 25th March 2022

£950 PCM (Per Calendar Month)

Flat, 1 Bedroom, 1 Bathroom, 1 Reception,  
Unfurnished

## Key Features





## THE PROPERTY



## Description;

This conversion flat comprises double bedroom, ensuite bathroom with shower, kitchen/breakfast room and lounge. There is parking with the flat and use of communal gardens.

## Location;

The apartment is located close to Stoke Park, but still within walking distance of the town centre.

Not suitable for children or pets.

The property is available now.

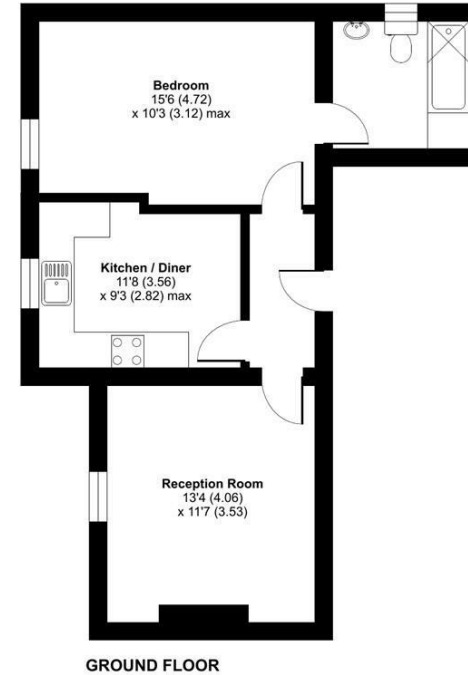
Rent includes water rates.

EPC rating D



## London Road, Guildford, GU1

Approximate Area = 531 sq ft / 49.3 sq m  
For identification only - Not to scale



 RICS Certified Property Measurer  
Floor plan produced in accordance with RICS Property Measurement Standards incorporating International Property Measurement Standards (IPMS2 Residential). © nichecom 2022. Produced for Grantleys. REF: 627153

## Guildford

Poyle House 24 Epsom Road  
Guildford  
Surrey  
GU1 3LE

Tel: 01483 407600

