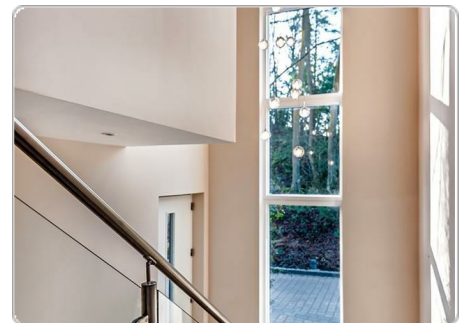


CHANTRY QUARRY,
GUILDFORD,
SURREY,

£6,000 PCM



4 Bedrooms . 2 Receptions . 3 Bathrooms . House - Terraced

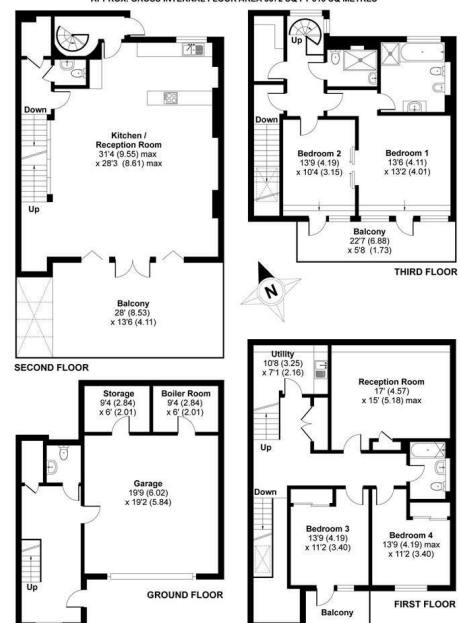
Available: 14th April 2022

A highly sophisticated four bedroom contemporary family home, light-filled and spacious, in a desirable town centre location. Available in April

- Town centre location
- Gated, award winning development
- Four double bedrooms
- Three bathrooms
- High standard throughout
- Double garage
- Available April

Chantry Quarry, Guildford, GU1

APPROX. GROSS INTERNAL FLOOR AREA 3372 SQ FT 313 SQ METRES



Whilst every attempt has been made to ensure the accuracy of the floor plan contained herein, measurements of doors, windows and rooms are approximate and no responsibility is taken for any error, omission or misstatement. These plans are for representation purposes only as defined by RICS Code of Measuring Practice and should be used as such by any prospective purchaser. Specifically no guarantee is given on the total square footage of the property if quoted on this plan. Any figure given is for initial guidance only and should not be relied on as a basis of valuation.