



PLAISTOW, WEST SUSSEX, RH14 0PQ

A detached and spacious farmhouse presented in excellent order and situated in a stunning rural location. There is a large garden surrounding the property and fabulous countryside views.

Available: 23rd December 2021

£1,750 Per Calendar Month (Per Calendar Month)

House - Detached, 3 Bedroom, 1 Bathroom, 1 Reception, Unfurnished

Key Features

- Stunning Views
- Quiet Location
- 15 minute drive to Haslemere





THE PROPERTY



This detached house is situated along a private farm track which leads to the main farmhouse. There are lovely countryside views all around. Recently redecorated, the accommodation comprises; entrance hall, spacious double aspect sitting room with patio doors to the garden providing lovely views. A good size fitted and equipped kitchen/dining room. Cloakroom. On the first floor are three good size bedrooms all with built in cupboards. A newly fitted family bathroom, large landing and a large eaves storage cupboard. A pretty garden surrounds the property which adjoins fields. Double garage and ample private parking.



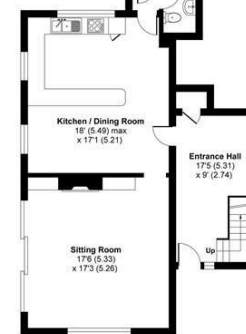
Little Haymans, Shillinglee Road, Plaistow, Billingshurst, RH14

Approximate Area = 1817 sq ft / 169 sq m
 Limited Use Area(s) = 37 sq ft / 3 sq m
 Outbuilding = 72 sq ft / 7 sq m
 Total = 1926 sq ft / 179 sq m

For identification only - Not to scale



Denotes restricted head height



Floor plan produced in accordance with RICS Property Measurement Standards incorporating International Property Measurement Standards (IPMS2 Residential). © nichocom 2021. Produced for Grantleys. REF: 792926

Haslemere Lettings

24 West Street
 Haslemere
 Surrey
 GU27 2AH

Tel: 01428 651241

