

HAYDON PLACE



HAYDON PLACE

SURREY, GU1 4LR

A fantastic two double bedroom, two bathroom town house in an excellent Guildford town centre location with off street parking.

Available: 8th July 2026

£1,900 PCM (Per Calendar Month)

House - Terraced, 2 Bedroom, 2 Bathroom, 1 Reception, Unfurnished

Key Features

- Guildford town centre
- Off street parking
- Two bedrooms
- Two bathrooms
- Available in July





THE PROPERTY

Description

The property has been built to a very high specification, including oak flooring, under floor heating on the ground floor and mood lighting system. On the ground floor is an open plan kitchen and living area fitted with Miele oven, hob, extractor, dishwasher, fridge & freezer. On the first floor is the master double bedroom with wood flooring, and ensuite shower room with automatic lighting. There is also a laundry room with Bosch washing machine and tumble dryer. The second floor includes a second double bedroom with carpet and a bathroom, also with automatic lighting. Outside to the front is off street parking for one car.



Location

Haydon Place is located in the very heart of Guildford town centre, with the new Waitrose on your door step. Guildford High Street is a short walk away and provides a large selection of shops, nightlife and restaurants, also within walking distance is Guildford main line station with regular, fast trains to London Waterloo.

Available July

Guildford Borough Council tax band D.

Holding deposit: £461

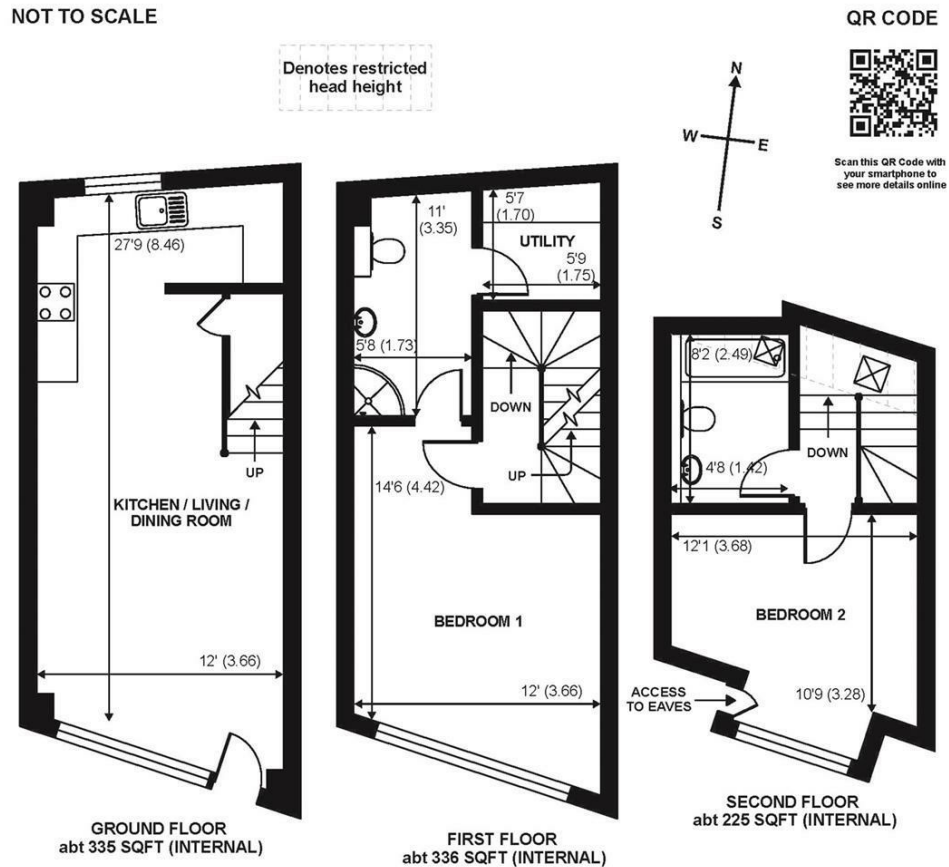
EPC rating C

NB The letting of this property is on behalf of a Connected Person to Grantley

To check broadband and mobile phone coverage please visit Ofcom here: ofcom.org.uk/phones-telecoms-and-internet/advice-for-consumers/advice/ofcom-checker



NOT TO SCALE



APPROX. GROSS INTERNAL FLOOR AREA 896 SQ FT 83.2 SQ METRES (INCLUDES RESTRICTED HEAD HEIGHT)

Copyright nichecom.co.uk 2017 Produced for Burns & Webber Niche ref. 179512

Guildford

Poyle House 24 Epsom Road

Guildford

Surrey

GU1 3LE

Tel: 01483 407600

