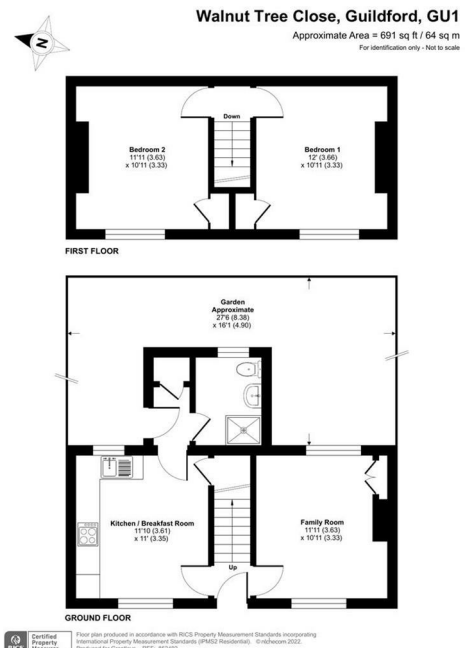


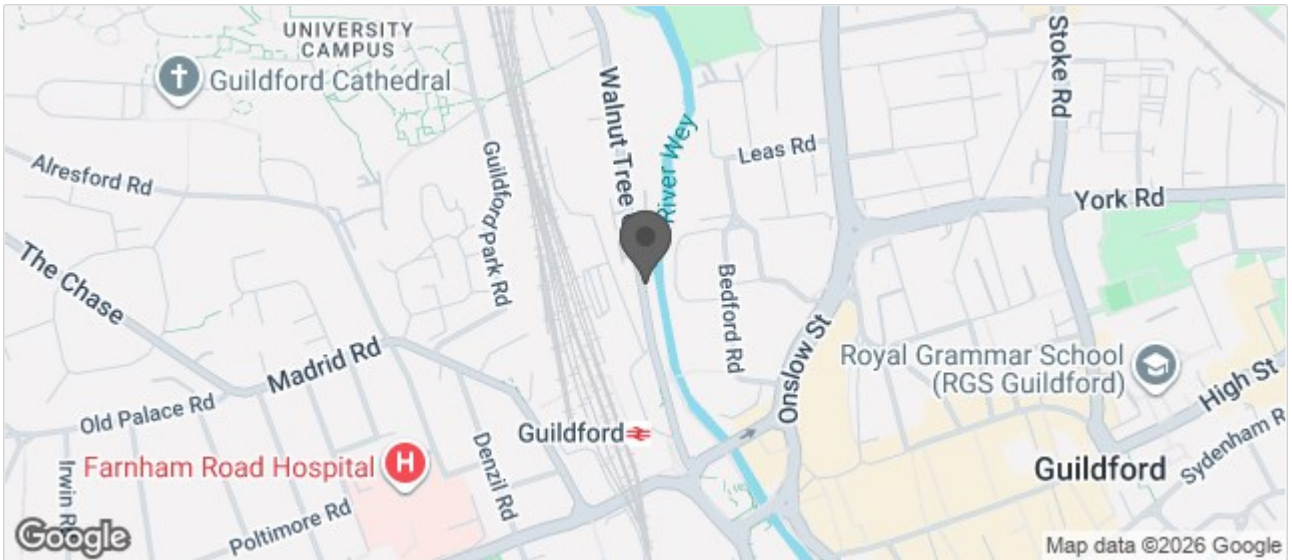
**WALNUT TREE CLOSE,  
 GUILDFORD**
**£1,500 PCM**

**2 Bedrooms . 1 Receptions . 1 Bathrooms . House - Semi-Detached**
**Available From: 22nd December 2023**

Well presented two bedroom Victorian cottage in prime location for Guildford town centre and main line station.

- Town centre location
- Two double bedrooms
- River views
- Garden
- Modern kitchen
- Modern bathroom
- Available now





### Description

The ground floor includes a sitting room, modern kitchen with stone worktops, fridge/freezer, washer/dryer, electric oven and gas hob. The shower room is also downstairs and includes a rainfall shower head and a chrome, heated towel rail.

On the first floor are two double bedrooms with inbuilt cupboards.

There is a private garden at the rear with patio area.



### Location

Walnut Tree Close is located in a very central position in Guildford, within a very short walk of the main line station as well as the main shopping district.

The property is available now for a minimum of 12 months. Available now.

EPC rating D

Guildford Borough Council tax band C:  
 £1,936.05 (2023//24)