

# CHAPEL HOUSE



# CHAPEL HOUSE

GUILDFORD, SURREY, GU1 3UH

Split level one bedroom apartment in the heart of Guildford town centre.

---

Available: 22nd October 2021

£995 PCM (Per Calendar Month)

Flat, 1 Bedroom, 1 Bathroom, 1 Reception,  
Unfurnished

## Key Features





## THE PROPERTY



## Description

The entrance to Chapel House is on Chapel Street in Guildford town centre and stairs then lead up to the apartment front door where it occupies the top two floors of the building.

The front door of the apartment opens into an entrance hall and study area, also on this floor is a kitchen with appliances, bathroom shower over the bath and a bedroom.

On the next floor above is a double aspect sitting room.

## Location

Chapel House is located in the middle of Guildford within walking distance of many shops, restaurants, bars as well as the excellent transport links into London and beyond.

Available late October.

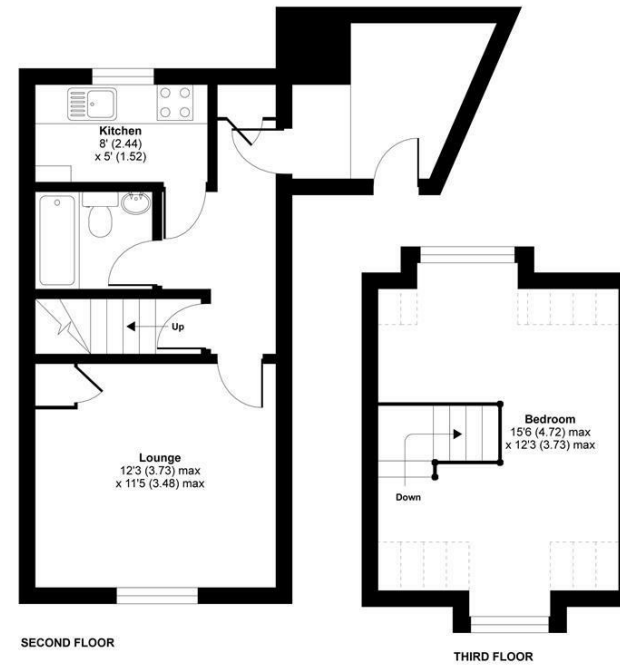
EPC E



## Chapel Street, Guildford, GU1

Approximate Area = 553 sq ft / 51.3 sq m  
Limited Use Area(s) = 33 sq ft / 3.0 sq m  
Total = 586 sq ft / 54.6 sq m  
For identification only - Not to scale

Denotes restricted head height



 Certified Property Measurer  
Floor plan produced in accordance with RICS Property Measurement Standards incorporating International Property Measurement Standards (IPMS2 Residential). © richoccom 2021. Produced for Grantleys. REF: 76684

## Guildford

Poyle House 24 Epsom Road  
Guildford  
Surrey  
GU1 3LE

Tel: 01483 407600

