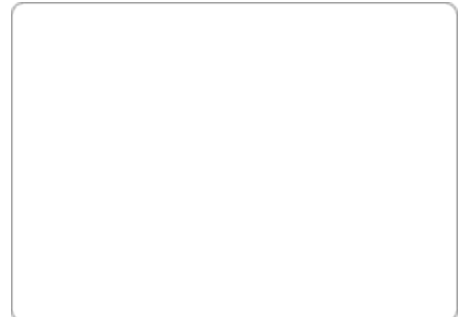


WALNUT TREE CLOSE,  
GUILDFORD,

£1,125 PCM

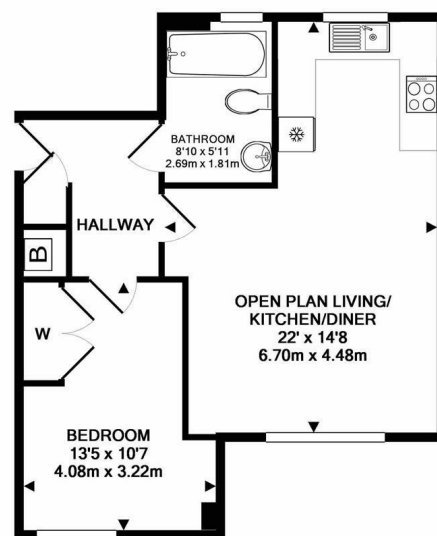


1 Bedrooms . 1 Receptions . 1 Bathrooms . Not specified

**Available: 10th September 2021**

Modern one bedroom part furnished apartment in an excellent town centre location with parking

- Very central apartment
- Parking for one car
- One bedroom



TOTAL APPROX. FLOOR AREA 501 SQ.FT. (46.5 SQ.M.)

Whilst every attempt has been made to ensure the accuracy of the floor plan contained here, measurements of doors, windows, rooms and any other items are approximate and no responsibility is taken for any error, omission, or mis-statement. This plan is for illustrative purposes only and should be used as such by any prospective purchaser. The services, systems and appliances shown have not been tested and no guarantee as to their operability or efficiency can be given

Made with Metrxiv ©2018