

WALNUT TREE CLOSE,  
SURREY,

£1,300 PCM



2 Bedrooms . 1 Reception . 1 Bathrooms . House - Semi-Detached

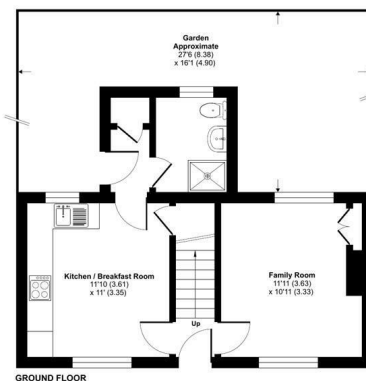
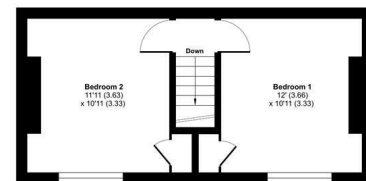
**Available: 11th June 2022**

Recently refurbished two bedroom Victorian cottage in prime location for Guildford town centre and main line station.

- Town centre location
- Two double bedrooms
- River views
- Garden
- Modern kitchen
- Modern bathroom

Walnut Tree Close, Guildford, GU1

Approximate Area = 691 sq ft / 64 sq m  
For identification only - Not to scale



 Floor plan produced in accordance with RICS Property Measurement Standards incorporating International Property Measurement Standards (IPMS Residential). © Grechcom 2022. Produced by Grantley, REF: 162302